



4.8 **Dimensioni**

4.8 **Dimensions**

4.8 **Abmessungen**

	PA...A - PA...B - PC...B												
	63			80			100		125		160		
A	194			266			331		405		510		
B	97			120			143		164		196		
C2	101			130			155		180		220		
D2_{H7}	25	28	30	30	35	38	40	45	50	55	60	65	70
E	140			196			242		293		367		
G	68			82			100		118		146		
H	70			98			121		146.5		183.5		
O	61.5			79.5			99.5		123.5		157		
P	30.3			43.9			59.6		72.4		85.1		
R	17.7			20.1			22.4		29.6		41.9		

PA...A					
D1_{h6}	19	24	28	38	48
V	40	50	60	80	80
L	157	194	229	281	342
U	66	79	91	111	152
kg	10	16	28	52	108

PA...B					
D1_{h6}	14	19	24	28	38
V	30	40	50	60	80
L	138	171	206	241	301.5
U	57.5	66	78.5	91	111.5
kg	12	18	34	58	120

	PC...B							
	63				80			
IEC	63 B5	71 B5	80/90 B5	80 B14	71 B5	80/90 B5	*90 B14	100/112 B5
Y	140	160	200	120	160	200	□120 / R 73	250
L1	141	148	168	168	173	193	193	203
U1	90.5	97.5	117.5	117.5	108	128	128	138

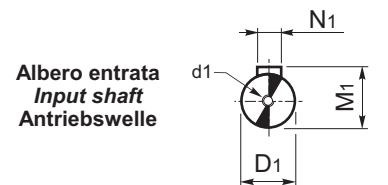
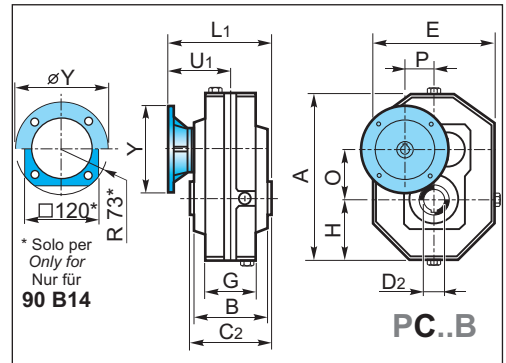
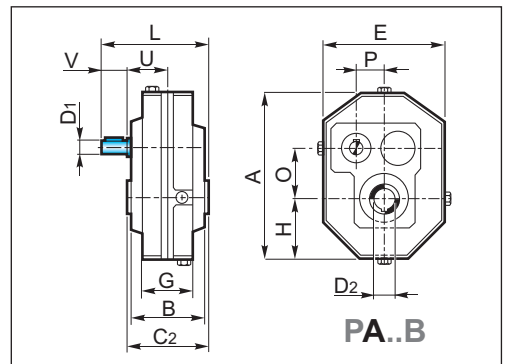
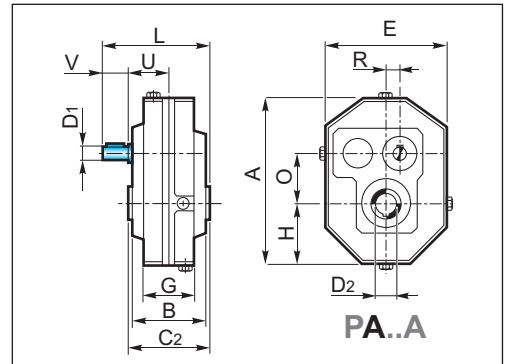
* Flange quadrate / Square flanges / Viereckige Flansche

	PC...B										
	100			125				160			
IEC	80/90 B5	100/112 B5	132 B5	80/90 B5	100/112 B5	132 B5	160/180 B5	100/112 B5	132 B5	160/180 B5	200 B5
Y	200	250	300	200	250	300	350	250	300	350	400
L1	221	231	253	244	254	276	306	298	348	348	348
U1	143.5	153.5	175.5	154	164	186	216	188	238	238	238

PA...A					
	63	80	100	125	160
D1_{h6}	19	24	28	38	48
d1	M8	M8	M8	M10	M12
M1	21.5	27	31	41	51.5
N1	6	8	8	10	14

PA...B					
	63	80	100	125	160
D1_{h6}	14	19	24	28	38
d1	M6	M8	M8	M8	M10
M1	16	21.5	27	31	41
N1	5	6	8	8	10

PA...A - PA...B - PC...B													
	63			80			100		125		160		
	C2	101			130			155		180		220	
D2_{H7}	25	28	30	30	35	38	40	45	50	55	60	65	70
M2	28.3	31.3	33.3	33.3	38.3	41.3	43.3	48.8	54.3	59.3	64.4	69.4	79.4
N2	8	8	8	8	10	10	12	14	14	16	18	18	20
Z	7.3	7.3	7.3	8.5	8.5	8.5	10.8	10.8	12	12	15.5	15.5	15.5



Albero uscita cavo
Hollow output shaft
Abtriebshohlwelle

